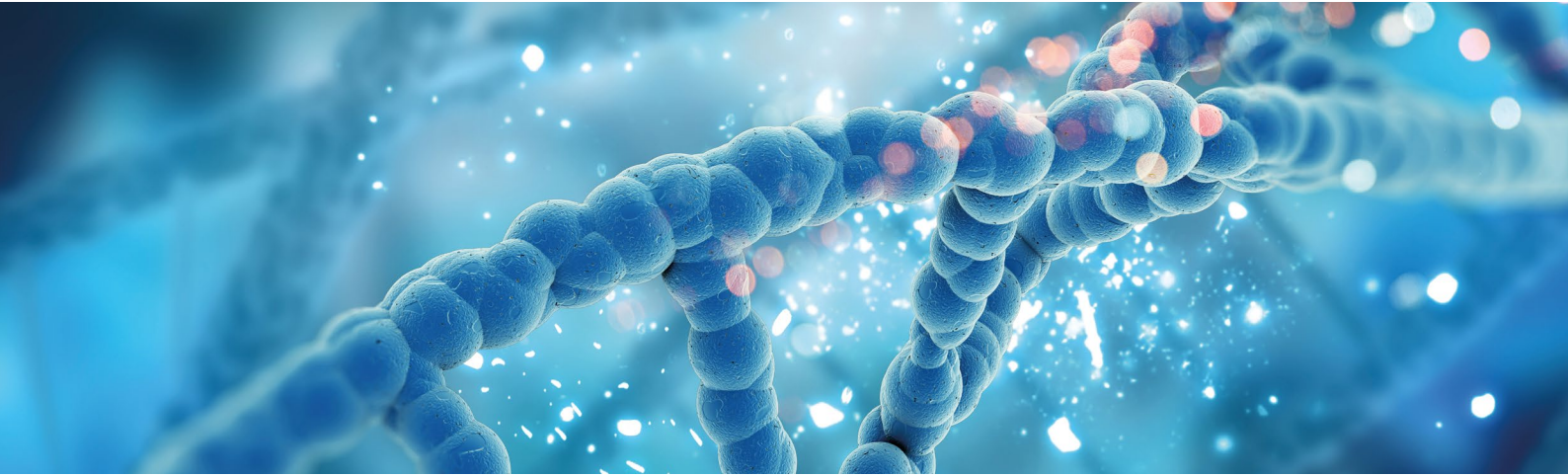


RT-LAMP

Reverse Transcription Loop-mediated isothermal AMPlification



Fluorometric RT-LAMP assays for the rapid detection of viral RNA

Targets

- ✓ SARS-CoV-2 coronavirus
- ✓ Influenza A and Influenza B viruses

Higher sensitivity than LFA and a shorter time-to-result compared to the RT-PCR

Advantages

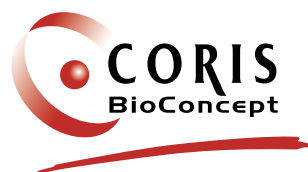
- High accuracy
- Rapid response: 20 minutes
- Low costs equipment
- Controls included
- Can be freeze-thawed at least 5 times with no adverse loss of functionality
- Adapted for individual testing as well as large sample series

SARS-CoV-2

- Genes targeted: ORF1ab region, N gene and E gene
- All VOC detected

Influenza A & Influenza B

- Influenza A H1N1 and H3N2 subtypes detected
- Influenza B Victoria and Yamagata lineages detected



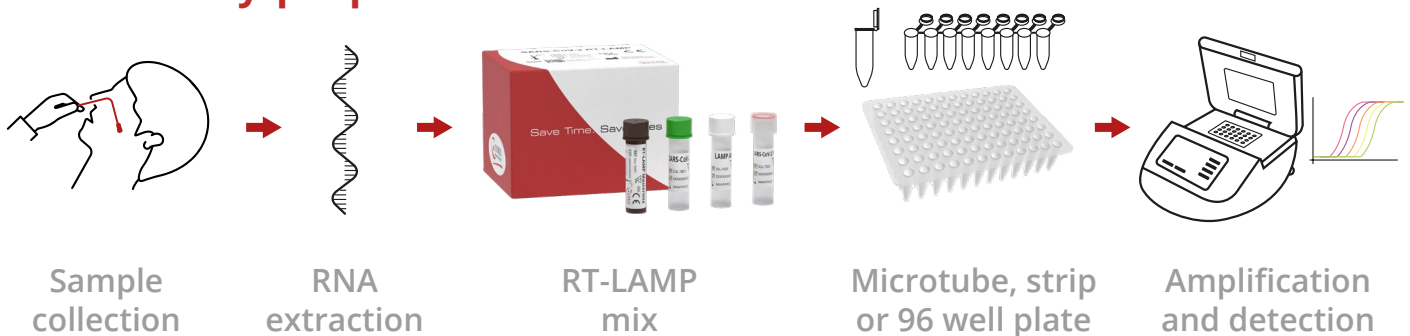
Innovative solutions for effective diagnostics

www.corisbio.com

RT-LAMP CORIS vs RT-PCR

	RT-PCR	RT-LAMP
Template	RNA	RNA
Temperature	Cycles (95°C-55°C-72°C)	Isothermal
Time-to-result	90 to 120 minutes	20 minutes
Required device	Thermocycler only	Thermocycler / Small reader
Sensitivity	+++	++
Specificity	+++	++++

LAMP assay preparation



Performances (versus molecular assays)

SARS-CoV-2

- Sensitivity: 95.7% (92.8 to 97.7%)
- Specificity: 99.5% (97.3 to 100%)

FLU A

- Sensitivity: 94.2% (85.8 to 98.4%)
- Specificity: 100% (96.5 to 100%)

FLU B

- Sensitivity: 95.8 % (78.9 to 99.9 %)
- Specificity: 97.1 % (91.9 to 99.4 %)

LAMP Range - components

Product name	Description	Code
SARS-CoV-2 RT-LAMP	RT-LAMP Mastermix, LAMP Additive, SARS-CoV-2 primers, SARS-CoV-2 RNA Control	L-0001
FLU A & FLU B RT-LAMP	RT-LAMP Mastermix, LAMP Additive, FLU A primers, FLU B primers, FLU A RNA Control, FLU B RNA Control	L-0002

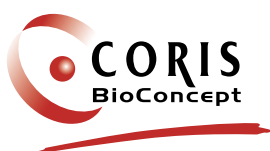
Reagent name	Number of tubes	Reactions/ tube	Tube identification
RT-LAMP Mastermix	1	50	Brown cap and tube
LAMP Additive	1	100	White cap
SARS-CoV-2 Primers	1	50	Green cap and green line on label
SARS-CoV-2 RNA Control	1	20	Clear cap and green line on label

50 reactions per kit

Reagent name	Number of tubes	Reactions/ tube	Tube identification
RT-LAMP Mastermix	2	50	Brown cap and tube
LAMP Additive	1	100	White cap
FLU A primers	1	50	Red cap and red line on label
FLU B Primers	1	50	Blue cap and blue line on label
FLU A RNA Control	1	20	Clear cap and red line on label
FLU B RNA Control	1	20	Clear cap and blue line on label

50 reactions for FLU A and 50 reactions for FLU B per kit

— Distributed by —



CREALYS Science Park
Rue Guillaume Fouquet 11
5032 Gembloux - BELGIUM
T +32 (0)81 719 910 - F +32 (0)81 719 919
sales@corisbio.com - www.corisbio.com



D-CUS-10-LAMP 02
February 2023

MADE IN BELGIUM