



# How to insert Coris' rapid tests in your labs routine to detect AntiMicrobial Resistance

RESIST-BC

RESIST ACINETO

RESIST CTX-M

O.K.N.V.I. RESIST-5

ReSCape

RESIST-3 O.K.N. K-Set

OXA-23 K-Set

OXA-48 K-Set

RESIST-3 O.O.K. K-Set



## Rapid tests for AMR testing

## AMR Worldwide situation

### Tackling Antimicrobial Resistance: A Global Health Priority

Antimicrobial resistance (AMR) poses a significant global health challenge, causing an estimated 4.95 million deaths in 2019, disproportionately affecting low- and middle-income countries (LMICs). The World Health Organization (WHO) has released the 2024 Bacterial Priority Pathogens List (BPPL), categorizing 15 families of antibiotic-resistant pathogens into critical, high, and medium priorities to guide research, development, and public health strategies.

### Innovating for a Healthier Future

At **Coris BioConcept**, we are committed to developing advanced diagnostic tools to quickly identify resistance mechanisms. Our diagnostic strategies align with global AMR surveillance data, ensuring our solutions are both relevant and impactful.

### Collaborative Efforts

We are proud to collaborate with global health organizations in the fight against AMR. By integrating our innovative diagnostic tools, we aim to guide appropriate antimicrobial therapy and reduce the spread of resistance.

Join the Fight: together, we can make a significant difference in combating AMR and improving global health outcomes.



E *Enterococcus faecium*

S *Staphylococcus aureus*

K *Klebsiella pneumoniae*

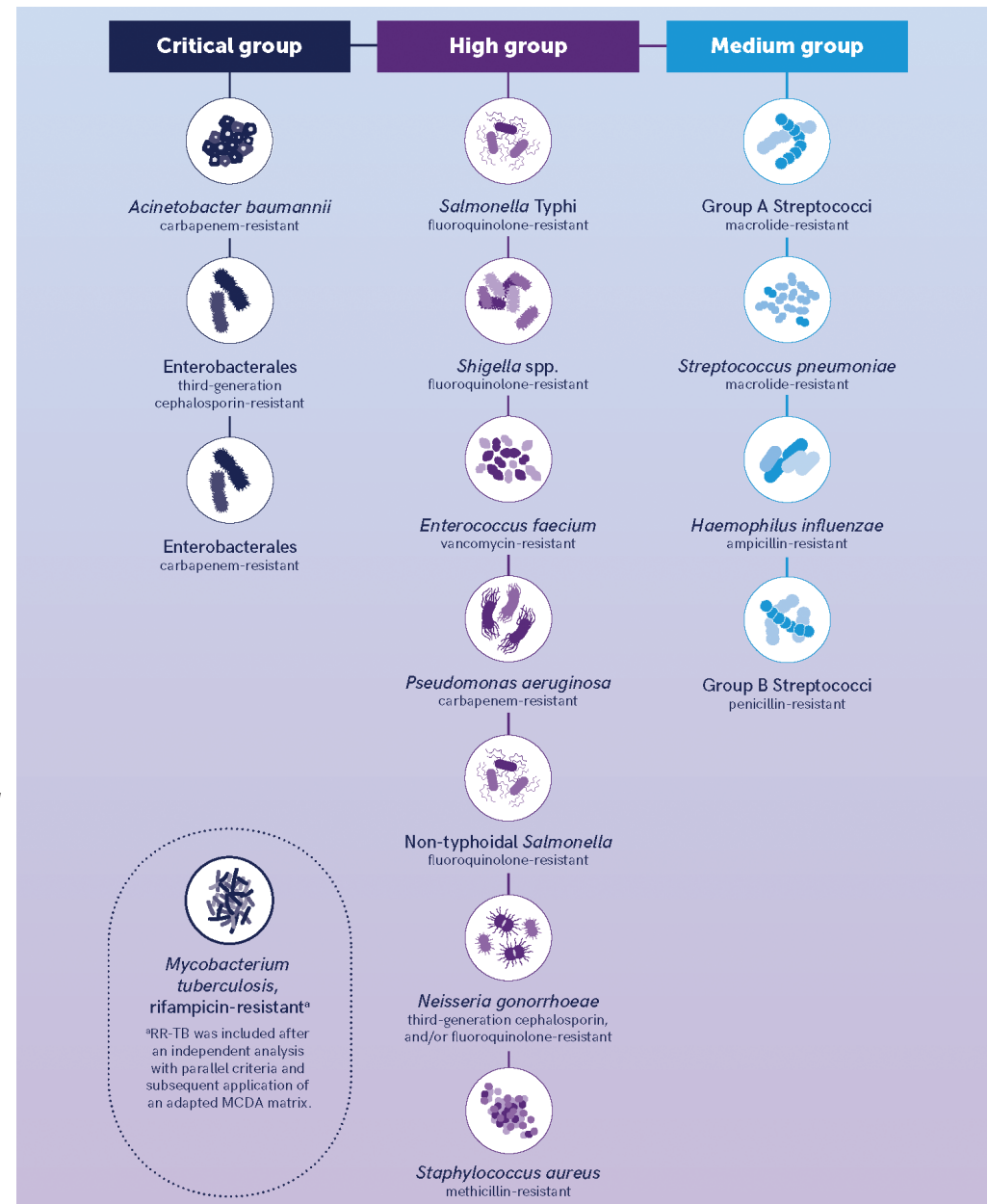
A *Acinetobacter baumannii*

P *Pseudomonas aeruginosa*

E *Enterobacter spp.*

E *Escherichia coli*

## WHO Bacterial Priority Pathogens List, 2024

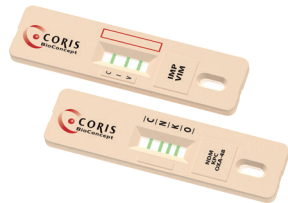


## Our Product Portfolio to tackle ESKAPEE pathogens

### O.K.N.V.I. RESIST-5

#### Targets

- ✓ OXA-48
- ✓ KPC
- ✓ NDM
- ✓ VIM
- ✓ IMP



### RESIST ACINETO

#### Targets

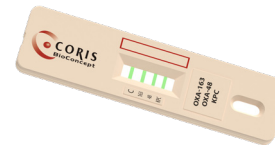
- ✓ OXA-40
- ✓ OXA-58
- ✓ OXA-23
- ✓ NDM



### RESIST-3 O.O.K.

#### Targets

- ✓ OXA-48
- ✓ OXA-163
- ✓ KPC



### RESIST CTX-M

#### Targets

- ✓ GROUP x (8 & 9)  
(CTX-M-8, CTX-M-9, CTX-M-14, CTX-M-27, CTX-M-65,...)
- ✓ GROUP 1  
(CTX-M-1, CTX-M-3, CTX-M-15, CTX-M-55, CTX-M-135,...)



### RESCAPE



Culture reagents kit for C-PGNB on rectal swab for the detection of carbapenemases

Compatible for all the targets of our RESIST kits (OXA-23 and CTX-M in validation)

IVD-R Certified

### RESIST-BC



Reagents kit for blood culture CPE detection

Compatible for all the targets of our RESIST kits (OXA-23 and CTX-M in validation)

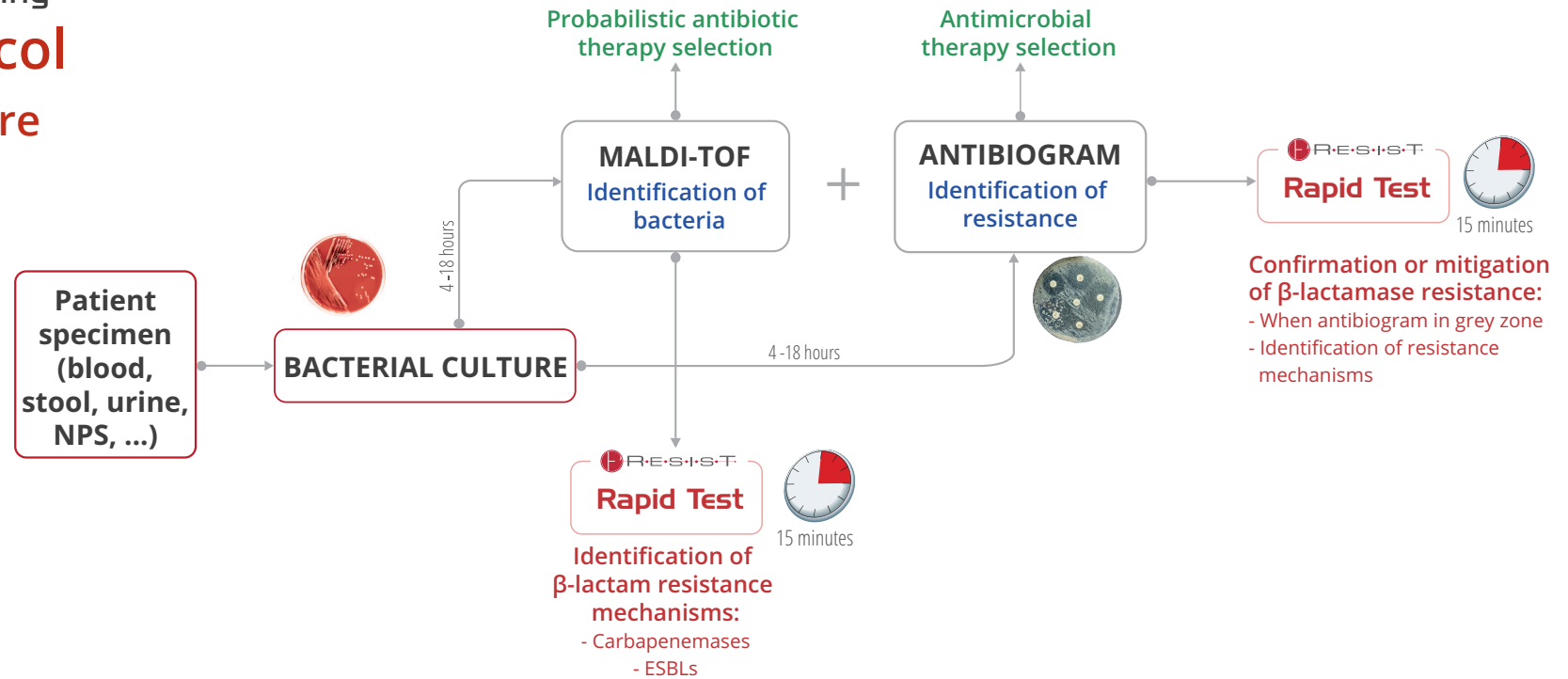
IVD-R Certified



## Rapid tests for AMR testing

# Standard Protocol

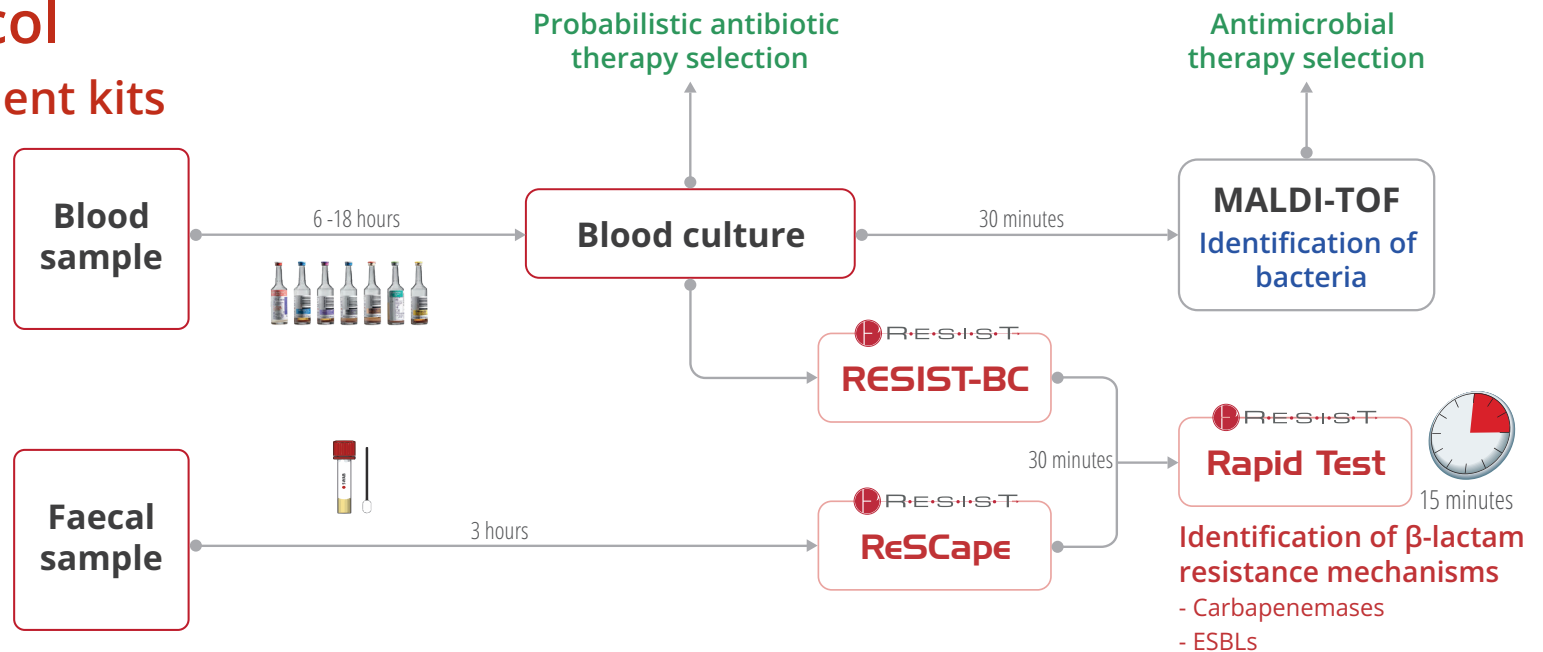
### with bacterial culture



## Rapid tests for AMR testing

# Fast track Protocol

### with culture enrichment kits



## Advantages vs other methods



15 min

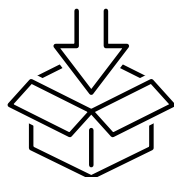
### TIME-SAVER

Directly from samples  
Fastest Time-to-Result in 15 min



### EASY-TO-USE

No specific equipment required  
No specific skills required



### EASY-TO-HANDLE

Long shelf life  
Store at room temp  
Provided with all necessary equipment



### AFFORDABLE

Compared to PCR solutions  
More efficient use of healthcare solutions



### EFFICIENT

Excellent specificity and sensitivity compared to competitors



### INNOVATIVE

Unique solutions for antimicrobial resistance detection

## Culture media compatible with our RESIST range

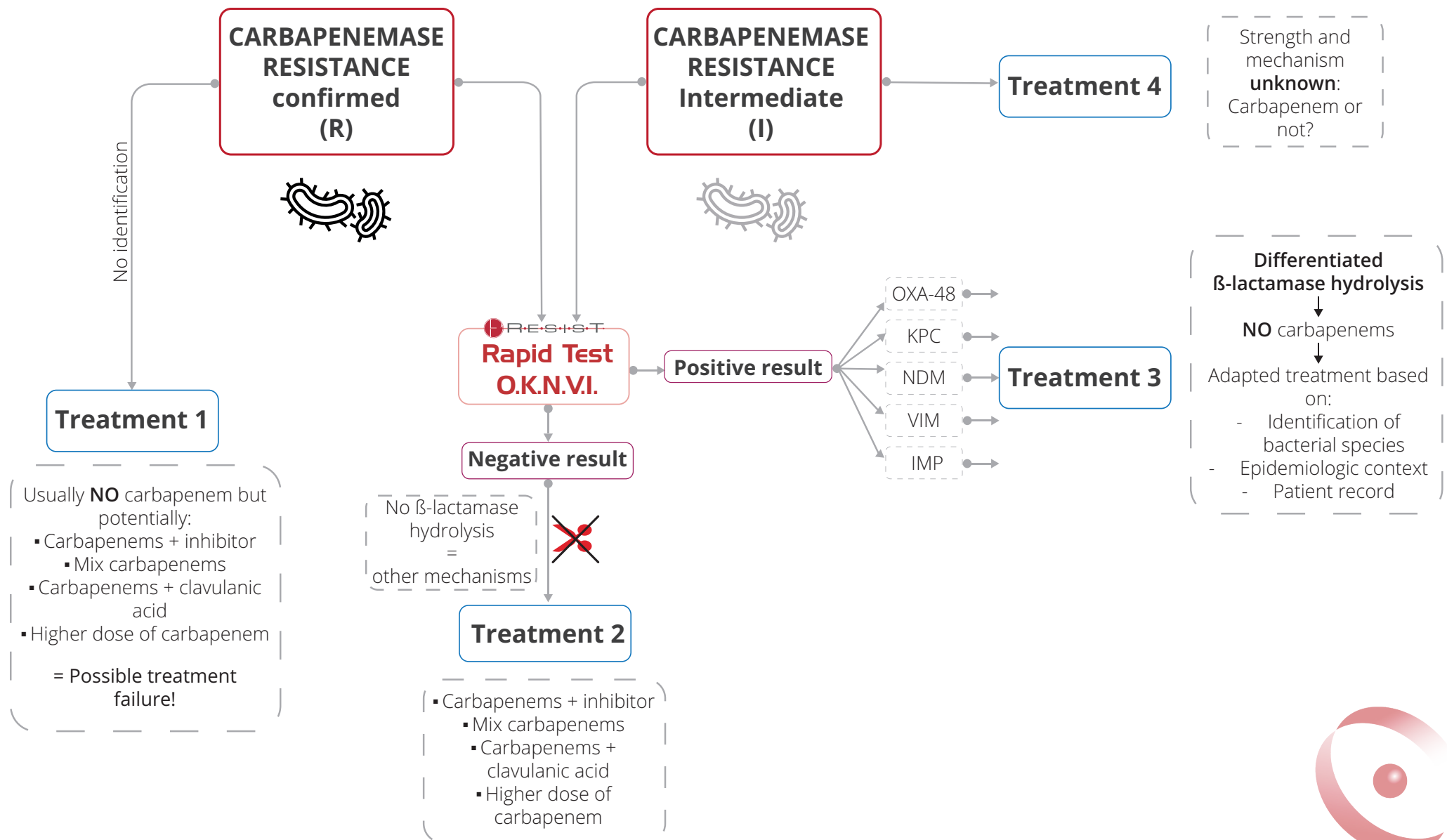
Non-selective agar & selective media	O.K.N.V.I. RESIST-5	RESIST ACINETO	RESIST CTX-M
Trypticase soy agar supplemented with 5% sheep blood	✓	✓	✓
Columbia + 5% sheep blood	✓	✓	✓
Columbia agar + 5% horse blood	Not tested	✓	Not tested
Mueller-Hinton II agar	✓	Not advised	✓
MacConkey agar	✓	✓	✓
Drigalski agar	✓	✓	✓
CLED agar	✓	✓	✓
UriSelect 4	✓	✓	✓
mSuperCarba	✓	✓	Not tested
chromID Carba	✓	✓	Not tested
chromID OXA-48	✓	Not tested	Not tested
chromID BLSE	✓	✓	✓
chromID CPS Elite	✓	✓	✓
CHROMagar KPC	✓	Not tested	Not tested
Brilliance CRE agar	✓	✓	✓
Brilliance ESBL Agar	✓	✓	✓
CHROMagar Acinetobacter	Not tested	✓	Not tested
Chocolate agar PolyViteX	✓	✓	✓

More info on the culture media tested:  
<https://www.corisbio.com/faq/>



# Suspect. Test. Confirm.

## Post- Antibioqram

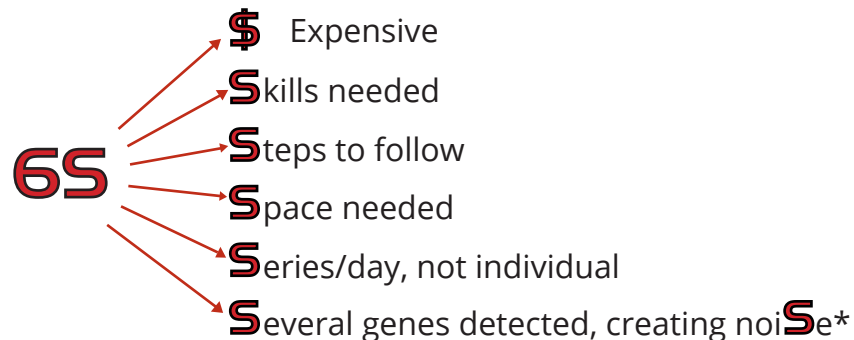




# When & where to use our rapid tests?

## 1. URGENCY / RAPIDITY REQUIRED

(RT-)PCR or LAMP technologies are usually the preferred or most used methods BUT:



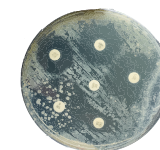
\* PCR detects genes of resistance while a rapid test detects the presence of enzymes produced by resistance genes

## 3. STANDARD SCREENING

- ◆ Asymptomatic patients
  - New patients
  - Routine surveillance, epidemiologic situation monitoring (hygienists)

## 2. VALIDATION OF ANTIBIOGRAM (AST)

Antibiograms (or susceptibility tests) determine the sensitivity or resistance of bacteria to various antimicrobial compounds, thus helping in selecting the best empirical antimicrobial treatment.



The 3 levels of results (Resistant, Intermediate, Sensitive) are nonetheless not always easy to interpret.

Our rapid tests can act as easy backup or support to confirm the antibiogram, which does not give all the resistance elements (e.g. resistance mechanisms used by the bacteria).

## 4. EXPRESS SCREENING

- ◆ Symptomatic patients → Faster medical decisions
- ◆ Outbreak → Faster quarantine & isolation lifting

## 5. ENVIRONMENT SCREENING

Indoor microbial tracking by taking swab samples from floors, walls, sinks in order to monitor, evaluate and control the spread of microorganisms.



Why using our rapid tests?



Lateral flow rapid tests will complete your laboratory equipments

## Variants recognized by our RESIST range

OXA-48	KPC	NDM	VIM	IMP	OXA-163	OXA-23	OXA-40/58	CTX-M Group 1	CTX-M Group x
OXA-48	KPC-1	NDM-1	VIM-1	IMP-1	OXA-163	OXA-23	OXA-24/40	CTX-M-1	CTX-M-8
OXA-162	KPC-2	NDM-2	VIM-2	IMP-2	OXA-247	OXA-27	OXA-58	CTX-M-3	CTX-M-9
OXA-181	KPC-3	NDM-3	VIM-4	IMP-3	OXA-438	OXA-105	OXA-72	CTX-M-10	CTX-M-14
OXA-204	KPC-4	NDM-4	VIM-6	IMP-4	OXA-517	OXA-225	OXA-143	CTX-M-15	CTX-M-18
OXA-232	KPC-9	NDM-5	VIM-11	IMP-5		OXA-239	OXA-164	CTX-M-18	CTX-M-19
OXA-244	KPC-11	NDM-6	VIM-12	IMP-6		OXA-565	OXA-213	CTX-M-32	CTX-M-21
OXA-245	KPC-12	NDM-7	VIM-13	IMP-7			OXA-255	CTX-M-33	CTX-M-24
OXA-370	KPC-14	NDM-9	VIM-19	IMP-8			OXA-499mut	CTX-M-37	CTX-M-27
OXA-436	KPC-19	NDM-10	VIM-24	IMP-10				CTX-M-55	CTX-M-65
OXA-484	KPC-23	NDM-11	VIM-27	IMP-11				CTX-M-57	CTX-M-93
OXA-519	KPC-28	NDM-12	VIM-28	IMP-12				CTX-M-62	CTX-M-137
OXA-535	KPC-39	NDM-14	VIM-29	IMP-13				CTX-M-71	CTX-M-174
OXA-793	KPC-41	NDM-16	VIM-30	IMP-14				CTX-M-135	
OXA-1181	KPC-46	NDM-17	VIM-31	IMP-15				CTX-M-136	
OXA-1205	KPC-49	NDM-18	VIM-34	IMP-16				CTX-M-139	
OXA-1207	KPC-50	NDM-19	VIM-36	IMP-18				CTX-M-162	
	KPC-53	NDM-20	VIM-42	IMP-19				CTX-M-186	
	KPC-61	NDM-23	VIM-52	IMP-22				CTX-M-193	
	KPC-62	NDM-24	VIM-53	IMP-26					
	KPC-66	NDM-29-like	VIM-63	IMP-27					
	KPC-109	NDM-35	VIM-64	IMP-28					
	KPC-115	NDM-51	VIM-75	IMP-29					
	KPC-130	NDM-65	VIM-78	IMP-30					
			VIM-86	IMP-31					
				IMP-34					
				IMP-37					
				IMP-39					
				IMP-42					
				IMP-50					
				IMP-58					
				IMP-59					
				IMP-61					
				IMP-63/50					
				IMP-71					
				IMP-79					
				IMP-93					

CREALYS Science Park

Rue Guillaume Fouquet, 11

5032 Gembloux

BELGIUM

T +32 (0)81 719 910 - F +32 (0)81 719 919

sales@corisbio.com www.corisbio.com

Distributed by



Made in BELGIUM

